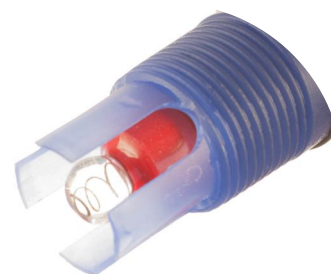


pHSense Continuous Online pH Meter

ENGEZER
SOLUÇÕES EM ANÁLISE DE
GASES

The pHSense range of pH analysers from Pi utilise the very latest and best pH sensors available in the world today for measuring the online pH of any aqueous solution. They are combination glass electrodes with integral reference, automatic temperature compensation, solid polymeric junction (pH4), which use no reagents, are extremely stable, and have reduced maintenance and reduced whole life costs.

- Up to 5 years continuous operation
- 1 year warranty (pH4)
- Stable and reliable - excellent process control
- Suitable for all potable and process waters
- Suitable for very low conductivity waters
- Integral temperature compensation
- Suitable for use in Autoflush (see separate brochure)



"The pH sensors from Pi are much more stable than others we've tried and they seem to last forever!" **Kahraman Kalyoncu, Turkey**

The pHSense sensors and flow cells are available with different controllers giving you the same great performance with different communication, display, and control options. With the pHSense range of online pH meters, you get everything that you need - and nothing that you don't.

CRONOS® pHSense



- High Quality - Lowest Cost
- Multilingual
- High resolution grayscale display
- 9 buttons for easy navigation
- Graphing and datalogging
- Enclosure; wall, panel, pipe or pole mounting. IP65/Nema 4x.
- Options:
 - Modbus LAN
 - Modbus RS485
 - Profibus
 - Up to 2 sensors
 - PID controls
 - Flow proportional controls
 - Remote sensors

CRIUS® pHSense



- Highest Quality - Low Cost
- Multilingual
- High resolution colour display
- Intuitive user interface
- Customisable home pages
- All CRONOS® options plus:
 - Downloadable data logs
 - Up to 4 sensors
 - Remote access via LAN
 - Remote access via GPRS
 - Expandable to 16 sensors

**For more information please see
the individual brochures for
CRONOS® and CRIUS®**

Sensor Selection

pH1



- Suitable for pools and spas
- Max. temp 80°C
- Flow cell mounting options

pH2*



- Suitable for potable and process waters
- Max. temp 80°C
- Flow cell, at line tee, handrail and welding stub mounting options

pH3*



- Suitable for waste water
- Max. temp 80°C
- Autoclean immersion, at line tee, handrail and welding stub mounting options

pH4*



- Suitable for potable and process waters
- Max. temp 100°C
- All mounting options

**Includes a temperature sensor for automatic temperature control*

Principle of Operation

At the heart of the pHSense are the pH electrodes. The pH4 electrode is patented and has a large area electrochemically active solid polymer junction. This innovative design makes the electrode more responsive and with a longer life than ordinary electrodes (typically 3-5 years). Although they command a higher price in the market place these sensors are more than cost effective with their longer life and considerably lower maintenance requirements, typically only needing calibration once per two or three months.

pH4 is particularly sensitive to difficult pH4 applications such as very low ionic strength waters or chemically corrosive applications. pH1 - pH3 are less expensive, more traditional combination electrodes.

Autoflush

As described in a separate brochure (ISB36 Autoflush), the pHSense can come equipped to automatically clean itself at user defined intervals with all the benefits of no operator intervention for 6 months. The Autoflush is particularly useful in food preparation, pulp and paper, and many applications where there is likely to be a build up of solids in the sample. Autoflush is available for at line, and in line versions including dip and screw in autoclean pipe version. Please see the Autoflush brochure (ISB36) available on our website, or if you are online, please [click here](#).

Specification*

pH Electrodes

Type:	Combined reference, and measuring electrode
Reference Type:	Patented electrochemically active solid polymer junction (pH4) Ag/AgCl gel filled (pH1-pH3)
pH Range:	0-14
Slope:	95-102%
Pressure range:	0-10Bar
Long Term Stability (drift):	<0.01 pH/Hour
Reproducibility:	<0.01 pH
Impedance:	pH Glass <200 MOhm
Solid State:	<200 KOhm
Response Time:	95% of step pH2 to pH12 <5s
Temperature Range:	0-100°C (pH4) 0-80°C (pH1-pH3)
Wetted Surface:	pH Glass - Red Polymer - PVDF Body - Viton O rings
Cable:	Low Noise Coaxial + 4 wires Cable length - 6m
Shelf Life:	12 Months
ATC:	PT100
Estimated life:	36 months application dependent (pH4) 12-18 months application dependent (pH1-pH3)
Warranty:	1 year (pH4) 3 months (pH1-pH3)

Applications

- Remote Sites
- Food Preparation
- Potable Water
- Cooling Towers
- Paper Mills
- Chemically Challenging Applications

Anywhere you have a requirement to measure pH is a suitable application for the pHSense. The pHSense pH meter range is particularly suited to working in sites where reliability and ease of use are most important. One area where the pHSense excels is in the measurement of pH in very low conductivity or ultra clean water.

Multi-Sensor Systems

The whole range of pHSense pH meters can be fitted with additional sensors such as chlorine or ORP. Please ask your local distributor for more details.

"Multi-sensor systems can save considerable sums without compromising measurement integrity"

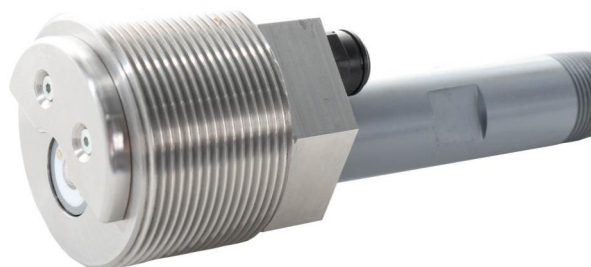
Dr Craig Stracey, UK

Installation

The pHSense can be installed in a variety of auxiliary flow cells and self-cleaning devices. Please see the pH Selection guide (ISB56) available on our website, or if you are online, please [click here](#).



Flow Cell Mounted



Pipe Insert Autoclean

**All subject to change without notice*