



Total Sulphur Analyzer & 802 H2S

Tel.: (21) 3445.8120

E-mail: engezer@engezer.com.br

Site: www.engezer.com.br

(21) 97144.1593 

@engezer 

Engezer Spengezer 

sergio.engezer 

SPECIFICATIONS

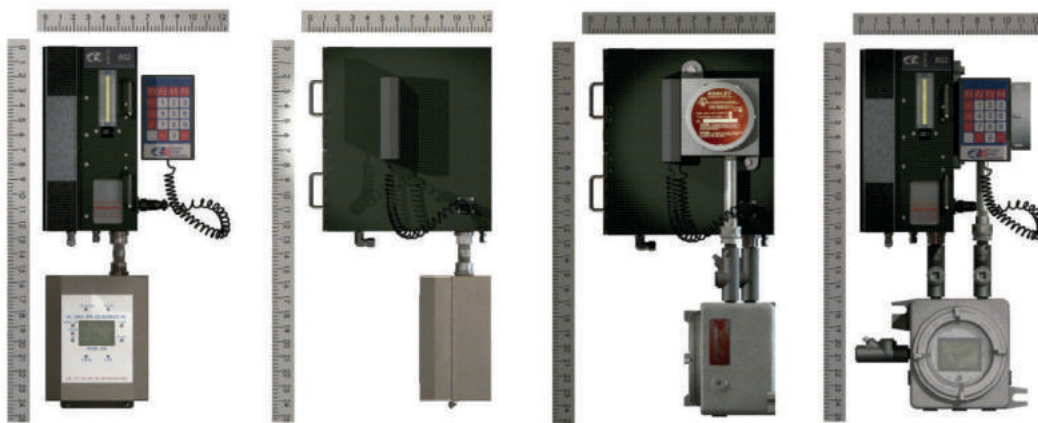
Ranges:	Up to 0-2000 ppm with no dilution; up to 0-100% with dilution
Low Range:	0-1 ppm or less (Please consult factory)
Streams:	1 + calibration, reference and zero
Electrical:	All systems are CSA C/US or field certified Class 1, Div I, Group B,C,D Class 1, Div II, Group B,C,D
Total Sulphur:	Optional
Linearity:	±1% of full scale
Repeatability:	±1% of full scale > 1 ppm ±2.5% of full scale < 1 ppm ±2.5% of full scale > 200 ppm ±2% of full scale for total sulfur
Ambient:	10-50°C (without enclosure)
Cycle Time:	Depends on range and gas concentration; Maximum cycle time user configurable; 10 second response to alarm
Tape Life:	Typical tape life given 3 minute cycle time is 5 weeks; Can be extended to as much as 6 months on low concentration
Zero Drift:	None
Power Consumption:	6W @ 24VDC
Power Input range:	10-32VDC AC power is optional
Outputs:	2 - isolated 4-20mA user scalable and programmable (16 Bits of resolution)

Inputs:	4 - Relay contact SPDT (form C) 2 Amps 220VDC max. – user programmable 4 - Solenoid drivers – 1A max. – User programmable 1 - USB or RS-232 Serial Port 1 - RS-232 Serial Port (Modem) 1 - RS-485 Serial Port (Isolated) 1 - High Speed LAN connection at 2.5Mbits per second All serial ports are MODBUS compatible. 9 - Visual indicators (LED) for quick status large graphics display for easy viewing
Electronics:	Dual processor design using intelligent colorimetric sensor Sensor is using 24 Bit AD converter to achieve greatest sensitivity and incorporates temperature sensor Real Time Clock for accurate event time stamping 512 Kbytes non-volatile memory for Data Logging and Audit Trail (Up to 10 months of H ₂ S concentration data logs) Field upgradeable program memory Tape length sensor to accurately measure tape movement and usage Independent Low Tape sensor is optional.
Back Pan Dimensions:	H ₂ S 25"H x 25"W Total Sulphur 48"H x 27"W
Weight:	802 Div II, 30 lbs 802 Div I, 40 lbs

ISO 9001: 2000



0020422:800260



802 H₂S & TOTAL SULPHUR ANALYZER

PATENT PENDING



ACCURATE • RELIABLE • PROVEN

802 H₂S & TOTAL SULPHUR ANALYZER



The Galvanic Applied Sciences Leadership continues

Galvanic is the leading supplier of H₂S / Total Sulphur analyzers in the world. Our foundation is built on years of innovations, leadership and customer satisfaction. **Galvanic's new patent pending algorithm is a revolutionary improvement in how H₂S is measured.**

Experienced

Over 25 years of experience.

Established

Galvanic is a reliable and trusted name in H₂S analysis.

Customer Service

Our experienced field support team is always there to meet your requirements.

802 H₂S ANALYZER

Galvanic's 802 series is designed to measure H₂S & Total Sulphur in gaseous streams. The detection system is based on the lead acetate tape method. The 802's patent pending analysis algorithm improves repeatability and linearity, while also increasing dynamic range without the need for permeation dilution. This analyzer will support ranges up to **0-2000 ppm without dilution.**

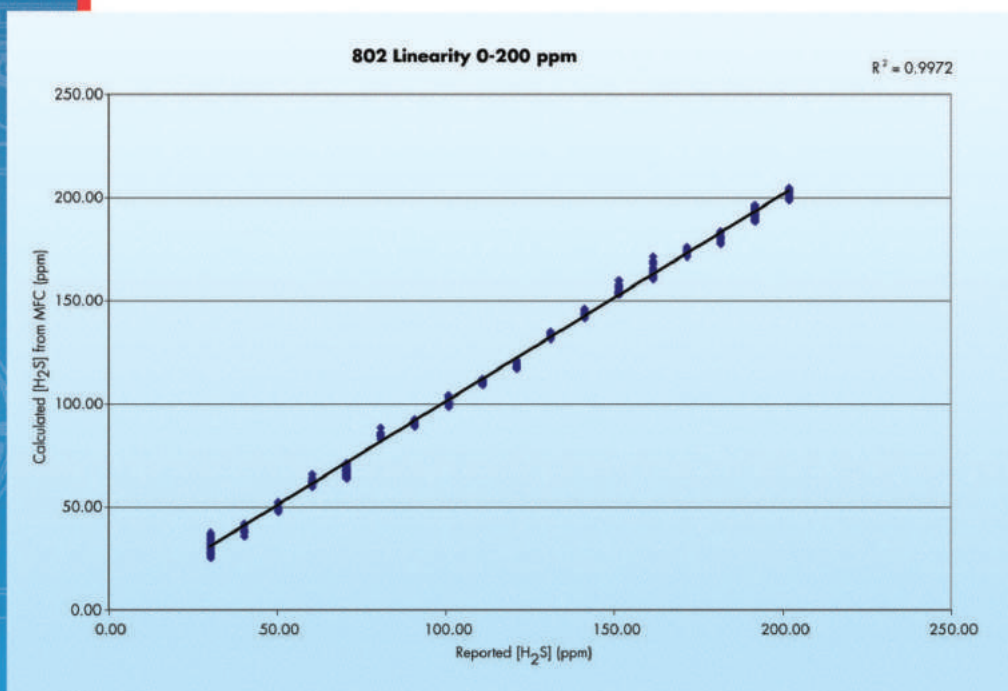
Auto calibration and reference can be manually triggered via the keypad, remotely triggered via MODBUS, or triggered on specific days and times. On-board analysis logging can be completely tailored to your needs. Galvanic's 802 analyzer maintain multiple logs, and internal parameters that can be logged. In addition, the 802 supports two 4-20mA analog outputs, four digital inputs, four relay outputs, and four solenoids which are fully configurable. The intrinsically safe keypad can be used to control all basic operations of the 802. With a large graphic display, this provides "at a glance" analyzer status and current reading.

FEATURES

- Improved repeatability, linearity and dynamic range with Galvanic's revolutionary patent pending analysis algorithm.
- 100ms response time (no autoranging required).
- Optical encoder to accurately measure tape length.
- Dual fully configurable 4 - 20mA analog outputs.
- MODBUS Communications via RS-232 (serial), isolated RS485, USB (for front panel access), ARCNET, and ETHERNET.
- All modbus registers are fully configurable supporting MODICON 16, MODICON 32, and ENRON formats.
- 512kB of memory for operational data logging, and audit trail.
- Large backlit LCD display allows for at-a-glance determination of analyzer status.
- Intrinsically Safe Keypad has twenty keys for easy menu navigation.

APPLICATIONS:

- Natural Gas Processing
- Liquified Petroleum Gas
- Petrochemical Feedstock
- Refining
- Natural Gas Transmission
- Liquified Natural Gas
- Fuel Cell
- Emission Monitoring



CONFIGURABLE SOFTWARE

The 802 comes with a Windows application which can be used to configure and monitor its operation. Almost all aspects of the 802 can be configured including alarms, stream operation, digital inputs, digital outputs, analog outputs, communications, and logging. Monitoring is achieved primarily with the main Watch window which shows the immediate status of the 802. In addition it is possible to download logs of analysis results, and an audit trail showing alarms and configuration changes.

802 COLORIMETRIC SENSOR

The 802 Sensor Block achieves cutting edge results by making accurate measurements at the source of the chemical reaction. All measurements, diagnostics, and calibrations are performed by an independent microprocessor on the sensor block. This ensures that every reading is as accurate as possible.

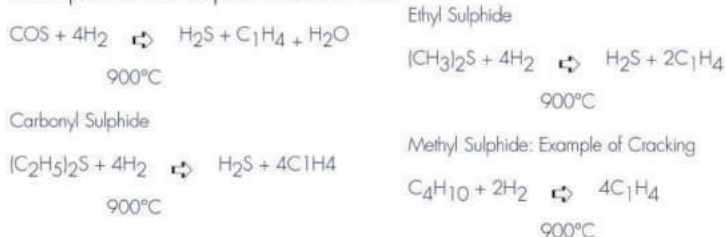
- Microprocessor controlled sensor
- Compensates for drift, aging and tape variances
- Automatic Zero set
- Automatic Span set
- Remote Diagnostics
- Digital Signal Processing for best accuracy and repeatability
- Automatic Light Emitter intensity compensation
- 24 Bit ADC converter for measurement in situ

TOTAL SULPHUR OPTIONS

The hydrogenation reaction furnace allows a standard Galvanic Applied Sciences H₂S analyzer to measure total sulphur concentration.

The sample is mixed with a hydrogen stream and heated to approximately 900°C. At this temperature in the presence of hydrogen all sulphur compounds will be converted to H₂S. Also, any hydrocarbon heavier than methane will be cracked to form methane.

Examples of the sulphur reaction are:

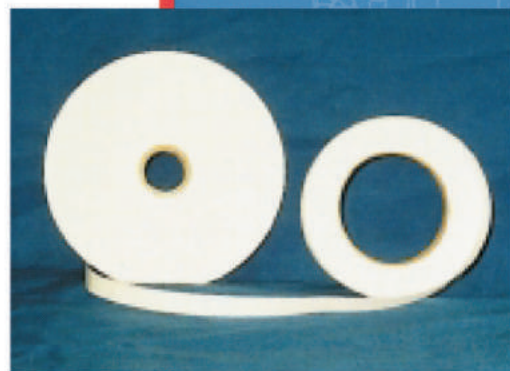
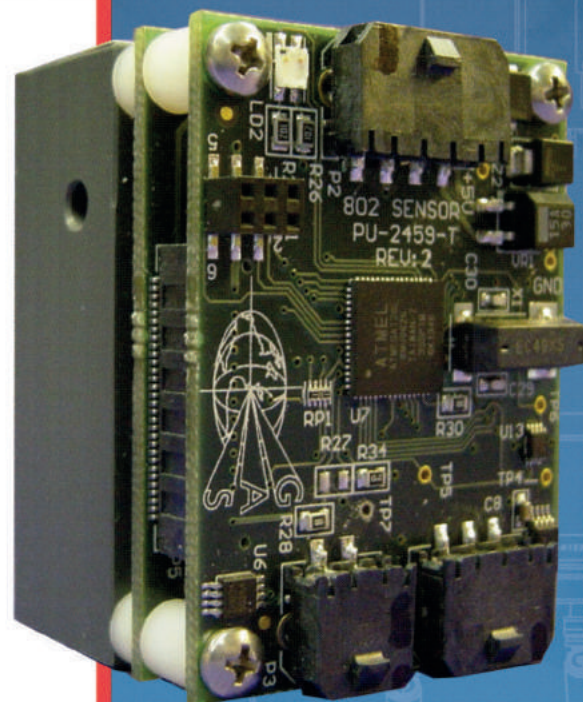
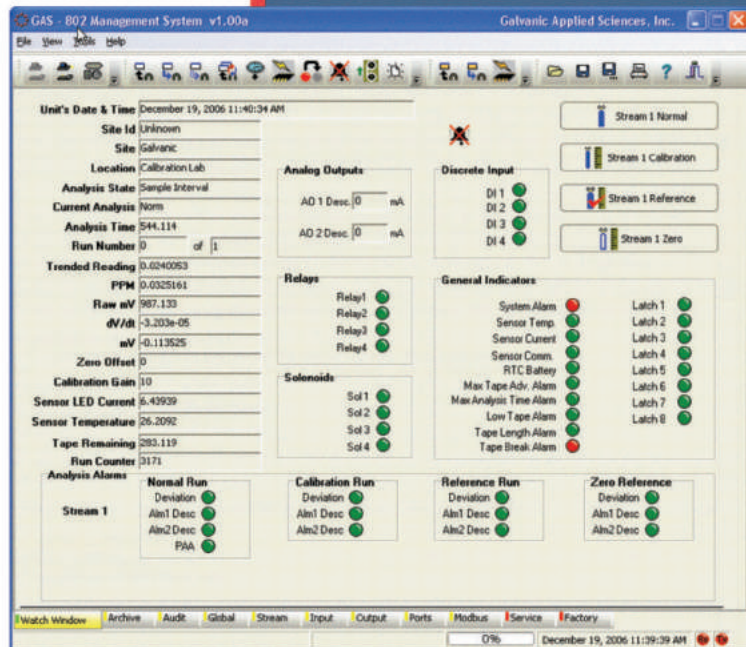


LEAD ACETATE TAPES

Our controlled plant environment ensures top quality in our lead acetate tapes.

Our automated process and constant quality checks ensure consistent product. All our tapes are cleaned after treatment to minimize problems caused by paper dust. We can provide tape lengths up to three hundred and fifty feet. Analyzers run cleaner and smoother with our tape.

- No interferences
- Sensitivity to ppb
- Colourless reactants
- Linear response



SPECIFICATIONS

Ranges: Up to 0-2000 ppm with no dilution;
up to 0-100% with dilution

Low Range: 0-1ppm or less (Please consult factory)

Streams: 1 + calibration, reference and zero

Electrical: All systems are CSA C/US or field certified
Class 1, Div I, Group B,C,D
Class 1, Div II, Group B,C,D

Total Sulphur: Optional

Linearity: $\pm 1\%$ of full scale

Repeatability: $\pm 1\%$ of full scale > 1 ppm
 $\pm 2.5\%$ of full scale < 1 ppm
 $\pm 2.5\%$ of full scale > 200 ppm
 $\pm 2\%$ of full scale for total sulfur

Ambient: 10-50°C (without enclosure)

Cycle Time: Depends on range and gas concentration;
Maximum cycle time user configurable;
10 second response to alarm

Tape Life: Typical tape life given 3 minute cycle time is
5 weeks; Can be extended to as much
as 6 months on low concentration

Zero Drift: None

Power Consumption: 6W @ 24VDC

Power Input range: 10-32VDC
AC power is optional

Outputs: 2 - isolated 4-20mA user scalable and
programmable (16 Bits of resolution)

4 - Relay contact SPDT (form C) 2 Amps
220VDC max. – user programmable
4 - Solenoid drivers – 1A max. – User
programmable
1 - USB or RS-232 Serial Port
1 - RS-232 Serial Port (Modem)
1 - RS-485 Serial Port (Isolated)
1 - High Speed LAN connection at 2.5MBits
per second
All serial ports are MODBUS compatible.
9 - Visual indicators (LED) for quick status
large graphics display for easy viewing

Inputs: 2 - Dry contact inputs - user programmable
2 - Wet inputs – for remote calibration etc. –
user programmable
Intrinsically Safe Keypad has 20 keys for
easy menu navigation

Electronics: Dual processor design using intelligent
colorimetric sensor
Sensor is using 24 Bit AD converter to
achieve greatest sensitivity and
incorporates temperature sensor
Real Time Clock for accurate event time
stamping
512 Kbytes non-volatile memory for Data
Logging and Audit Trail
(Up to 10 months of H₂S concentration
data logs)
Field upgradeable program memory
Tape Length sensor to accurately measure
tape movement and usage
Independent Low Tape sensor is optional.

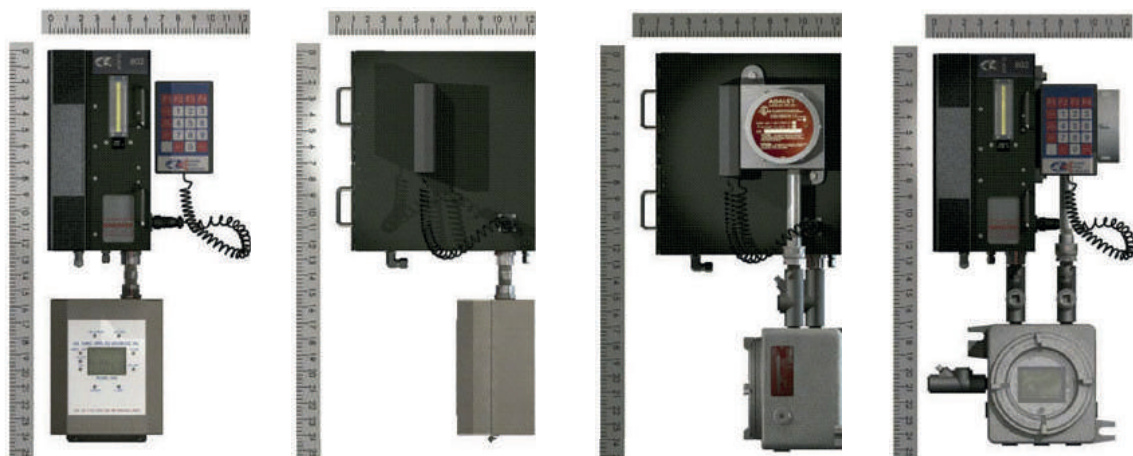
Back Pan Dimensions: H₂S 25"H x 25"W
Total Sulphur 48"H x 27"W

Weight: 802 Div II, 30 lbs
802 Div I, 40 lbs

ISO 9001: 2000



0020422:800260



✉ engezer@engezer.com.br

🌐 www.engezer.com.br

☎ 21.3445 8120

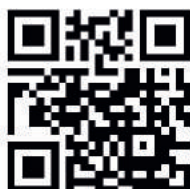


www.galvanic.com

**Caso queira adaptar este produto a suas necessidades
usando um sistema de condicionamento, uma
automação ou formando um produto, contate:**

COMERCIAL@ENGEZER.COM.BR

**para mais informações ou preços*



ENGEZER

SOLUÇÕES EM ANÁLISE DE
GASES



(21) 97144.1593



@engezer



Engezer Spengezer



sergio.engezer